



Creating healthy spaces



Fixscreen® 150^{EVO} (F)

Montage-richtlinie
Installation instructions

Index

1 • General.....	29
2 • Types of installation methods & design of the box.....	29
3 • Preparation of the empty box.....	31
3.1 • In case of option U-Safe® for installation in front of the window (IM 1).....	32
3.2 • In case of installation method 1, 4, 6 (without U-Safe®).....	33
3.3 • In case of installation method 7A & 7B.....	33
4 • Mounting in case of installation method 1, 4 & 6.....	35
4.1 • Retractable bottom rail (FH ≤ 2,7m).....	36
4.2 • Non-retractable bottom rail (2,7m < FH ≤ 6m).....	36
5 • Mounting in case of installation method 5 & 9.....	40
6 • Mounting in case of installation method 7A & 7B.....	43
7 • Electrical control.....	49
7.1 • The technical features of the motor.....	49
7.2 • The features of the electrical power connection.....	49
7.3 • In case of a black cable with UV resistant sheath (type: RR-F/RN-F).....	49
8 • Motor adjustment (upper/lower limits).....	50
8.1 • Adjusting upper end point:.....	50
8.2 • Adjusting lower end point:.....	50
9 • Final check for a single screen.....	50
10 • Final check for coupled Fixscreen®.....	51
11 • Maintenance.....	52
12 • Discard the product.....	53

1 • General

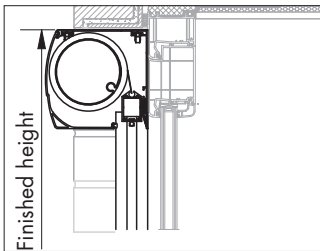
Fixscreen 150^{EVO} consists of:

- Square or softline box, with demountable fabric roller motor controlled, which is directly fixed against the construction (In case of installation method 1,4&6)
- Each screen has a pair of identical side channels
- In case of installation method 5 & 9, 2 brackets are delivered instead of a closed box
- screen of high-value polyester –or glass fibre fabric, with Fixscreen technology (wind tight technology due to the combination of a symmetrical zip and a patented wear-resistant H-PVC inner-rail)
- A retractable bottom bar, with extra load, which guarantees a fluent guidance of the fabric during rolling-up and rolling-down.
- Please check if all parts are included in the packaging.

2 • Types of installation methods & design of the box

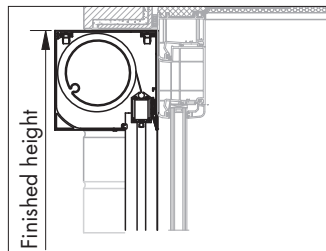
There are 6 different installation types:

Installation method 1 (Softline design)



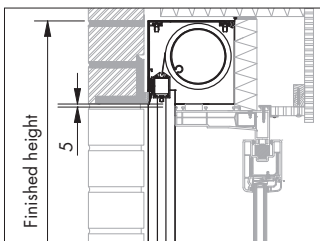
Surface-mounted, in front of the window

Installation method 1 (Square design)



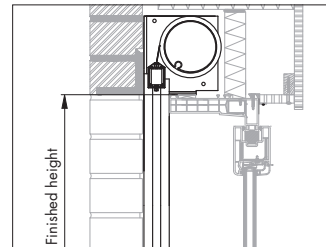
Surface-mounted, in front of the window

Installation method 4



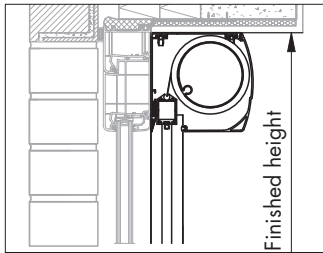
Hidden installation, reversed box, on top of the window with box, **without front cover**

Installation method 5



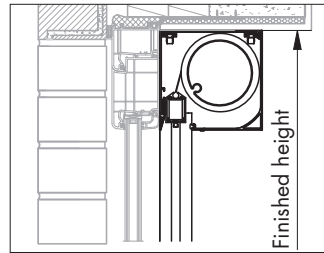
Hidden installation, with brackets, **without box**

Installation method 6 (Softline design)



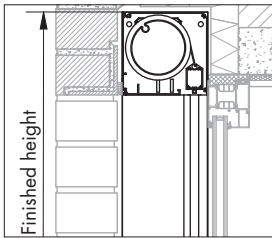
Surface-mounted, inside, in front of the window

Installation method 6 (Square design)



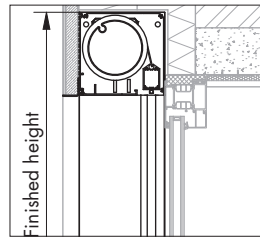
Surface-mounted, inside, in front of the window

Installation method 7A



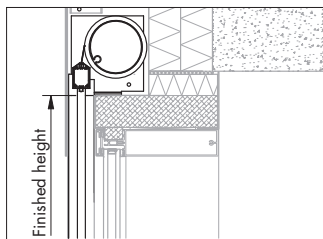
Hidden installation
in front/above the window with box

Installation method 7B

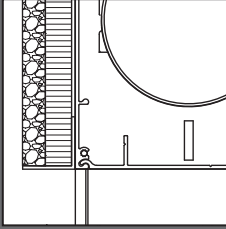


Hidden installation
in front/above the window with reversed box
and side channels

Installation method 9



Hidden installation, with brackets,
without box

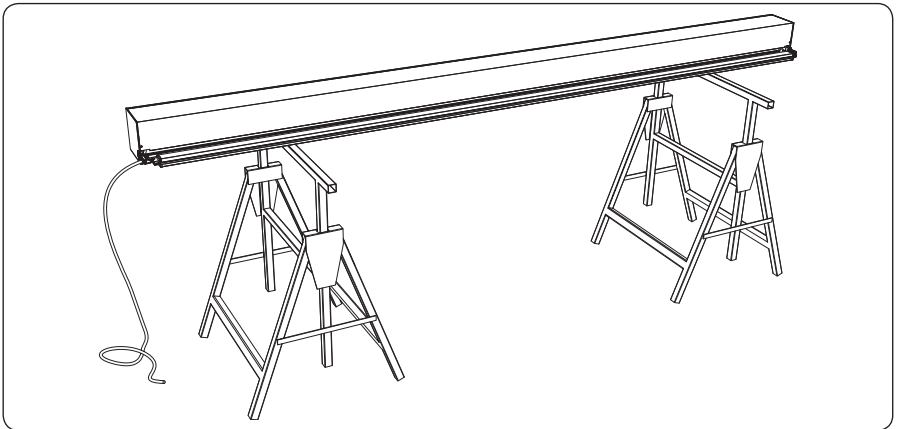


If the finish of your facade is plaster, you need to use a Renson® plaster profile (30mmx 30 mm). You may not plaster directly on the box. This profile is obligatory, independent of the width.

Remark:

- In case of installation method 1, 4, 6 & 7 the box is delivered with the fabric screen. The box is **directly fixed** against the construction.
- In case of installation method 4, please keep a distance of 5 mm between the bottom of the box and the upper side of the window (see fixation of the box)
- In case of installation method 5 & 9, 2 brackets and the fabric are delivered within the package.

3 • Preparation of the empty box

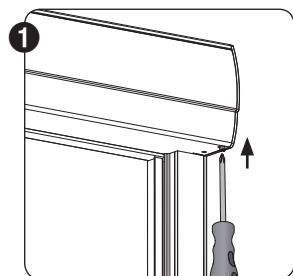


Place the box on a mobile workbench. Demount the cover plate from the box, by unscrewing 2 screws, on both ends of the box. In the box you will find 2 guiding pieces at each end of the fabric roller, fixed with a couple of screws. Unscrew them at both ends.

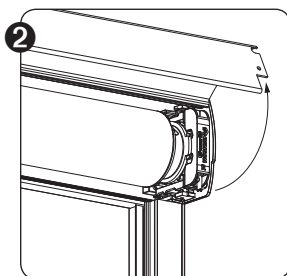
For a secure mounting, use and maintenance of your screen, you should take into account sufficient regulations (do not work on ladders and wear safety clothes and shoes).

EN Fixscreen® 150 EVO (F)

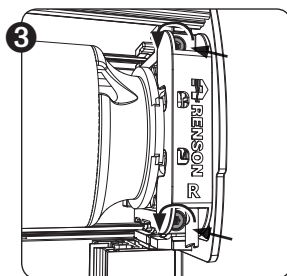
3.1 • In case of option U-Safe® for installation in front of the window (IM 1)



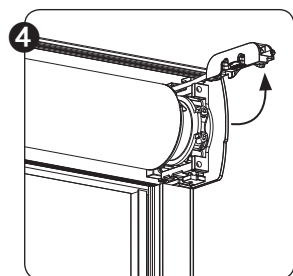
For a safe use of your screen, you need to fixate the box. Demount the front cover of the screen. Push on the pin of the U-Safe plug (at the motor side).



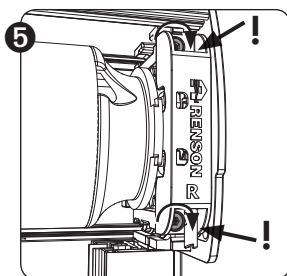
Remove the two screws at the underside of the front cover. Turn the front cover open and put it temporary in a dry spot.



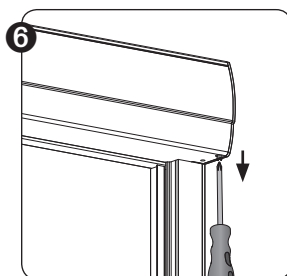
Unscrew the socket-head screws. Type Screw: DIN 912-M4x16 (2 pieces per U-Safe)



Take the U-Safe plug off the end covers. The Connect&Go plug is free for demounting the fabric roller. Demount of the fabric roller (see from 3.2 - 3.3)

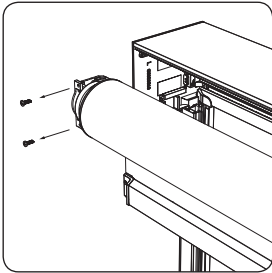


After mounting the fabric roller, you need to put the U-Safe plug back. **Tighten the socket-head screws!**

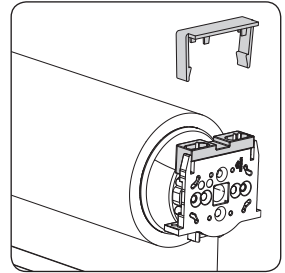
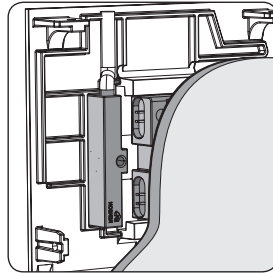


Put the front cover back in place and remove the pin. **The safety pin needs to be visible for a good functioning of the motor!** Control if the motor works.

3.2 • In case of installation method 1, 4, 6 (without U-Safe®)

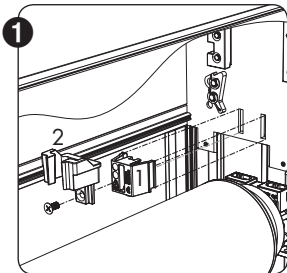


Pull gently the fabric roller with bottom bar, out of the box, holding both ends of the box. Due to the Connect&Go you do not have to struggle with the electric cable.

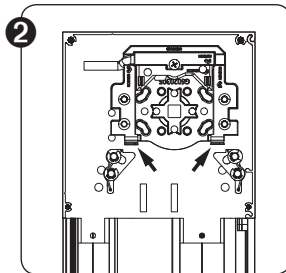


Place the black protection cap of the Connect&Go. Only when the PVC sliders are fully fixed, a good connection with the Connect&Go technology is guaranteed.

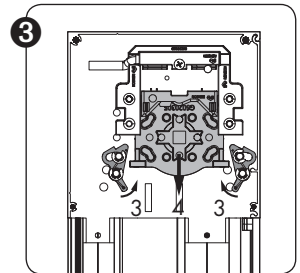
3.3 • In case of installation method 7A & 7B



Demount the cover plate from the box. Place the cover plate at a dry place. Undo the clipping piece ① which is used for closing the bottom of the box. Unscrew the guiding piece ② which is used for guiding the bottom rail into the box.

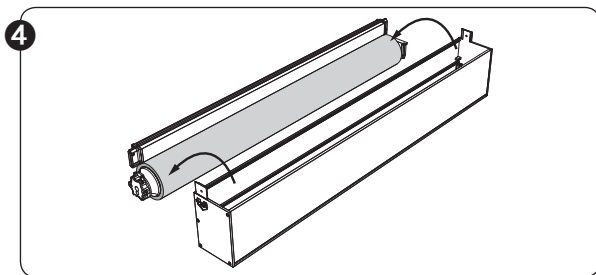


Unscrew the fabric roller on both sides

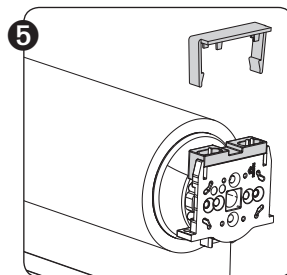


Push the fabric roller up on both sides while pressing the security cams ③. Pull gently the fabric roller out of the box, holding both ends of the box ④.

Always perform with 2 persons!

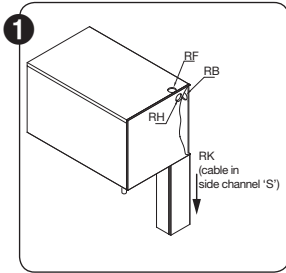


4 Hold the fabric roller on both sides upwards and remove from the box. Thanks to the Connect&Go you don't have to struggle with the cable.

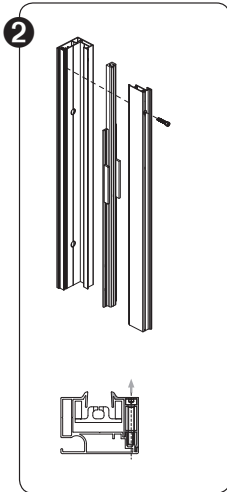


5 Place the black protection cap of the Connect&Go. Only when the PVC sliders are fully fixed, a good connection with the Connect&Go technology is guaranteed.

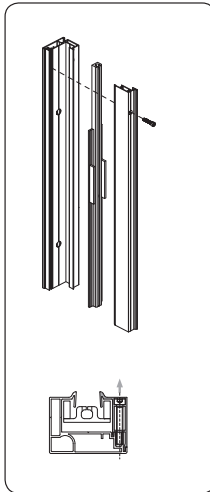
4 • Mounting in case of installation method 1, 4 & 6



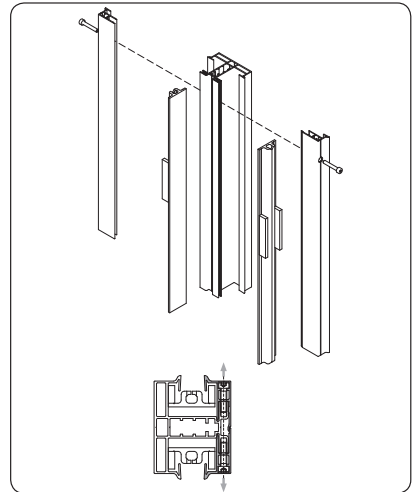
In case the power supply is taken from indoors, drill a hole of 10 mm, to gain access inside the building or construction, in function of the location of the cable feed: B, F, H, K. For an open type of side channel (type 'S'), the cable can be concealed in the side channel (feed type 'K').



Side channel S



Side channel G

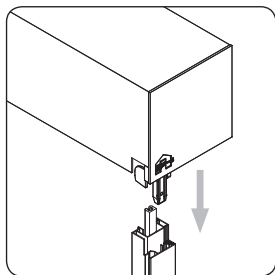


Coupling side channel 'K'

- Demount the 2-part side channel and in case of a coupled screen also the coupling side channel
- Use an Allen key type 3 for unscrewing the front part of the side channels: type 'S', 'G' and 'K'.
- A plastic end cap at the base of the side channels type 'S', 'G' and 'K' prevents the HPVC side channel from sliding down.
- This end cap can be removed if the rail is resting on a horizontal surface.

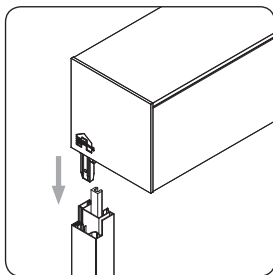
4.1 • Retractable bottom rail ($FH \leq 2,7m$)

Mounting of the box in case of IM 1 & 6

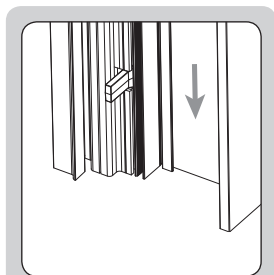


Slide the **empty box** into the side channel.
Fixate the empty box to the back part of the side channel.

Mounting of the box in case of IM 4



Slide the **empty box** into the back part of the side channel. Secure the box to the side channel. Do this at both sides. Please keep a **distance of 5 mm** between the bottom of the box and the upper side of the window.

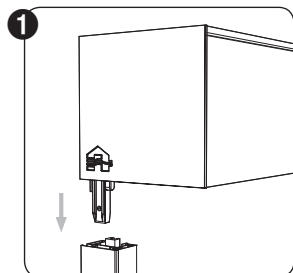


The PVC-side channel extends from the aluminium side channel. If you shorten the aluminium side channel, you need to take into account the same overlength for the PVC side channel.



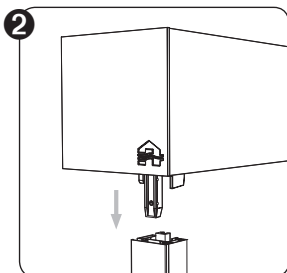
4.2 • Non-retractable bottom rail ($2,7m < FH \leq 6m$)

Mounting of the box in case of IM 1 & 6

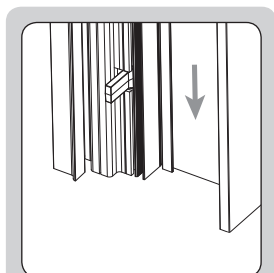


Slide the **empty box** into the side channel.
Fixate the empty box to the back part of the side channel.

Mounting of the box in case of IM 4

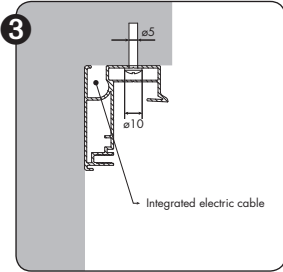


Slide the **empty box** into the back part of the side channel. Secure the box to the side channel. Do this at both sides. Please keep a **distance of 5 mm** between the bottom of the box and the upper side of the window.

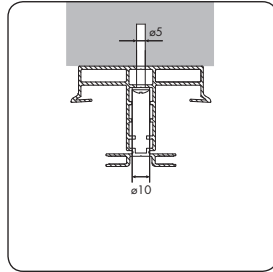


The PVC-side channel extends from the aluminium side channel. If you shorten the aluminium side channel, you need to take into account the same overlength for the PVC side channel.

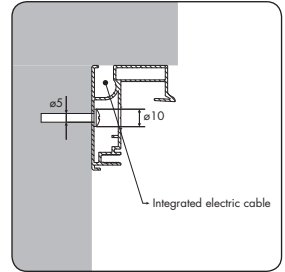




Mounting of the pre-drilled side channel through the backside (ø5mm)



Mounting of the coupling side channel trough the backside (ø5mm)

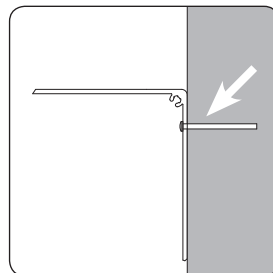
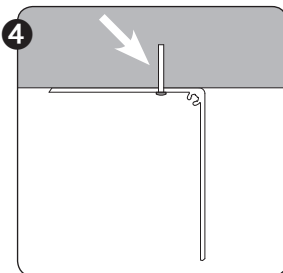


Mounting of the pre-drilled side channel sideways (ø5mm)

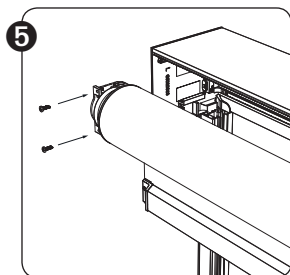
The open side channel type 'S' and the closed side channel 'G' are standard pre-drilled (always the hole of ø10). There are 2 mounting options: **through the side** or **through the back** of the side channels. The hole of ø10 is always pre-drilled, the hole of ø5 mm still needs to be drilled. The coupling side channel is not pre-drilled en can only be placed through the backside. Respect the top position of the side channels! In case of a pre-drilled version: keep the first pre-drilled hole at a starting position of 125 mm from the topside. Keep a maximal distance of 750 mm between each sequential hole. Mount the side channels with the box as total system unto the window profile or construction.



The first hole is foreseen at a distance of **125 mm** from the top. After the first hole, the holes are pre-drilled sequential over a distance of **250 mm**.



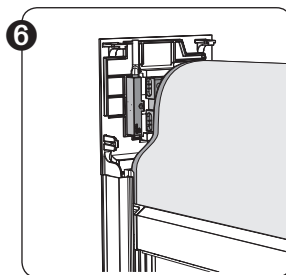
- We strongly advise to secure the box to the construction by using counter sunk screws and avoid each contact with the fabric on the left hand side and right hand side
- Always secure the box as close as possible at the groove.
In case of a width > 3 m, extra fixation of the box in the middle is obligatory.
- The fixation needs to be done on the extremities of the box, as close as possible towards the side brackets of the box
- Use counter sunk screws for the sealing of the box.
- Pay attention, so the cable does not get clamped.



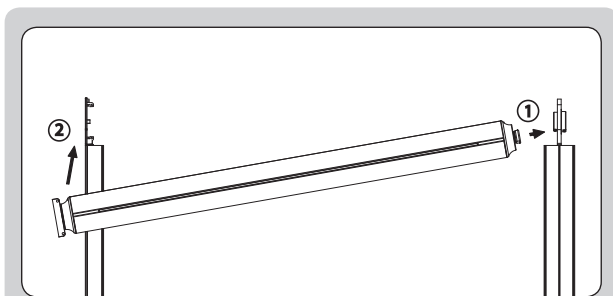
If the box is completely fixed (on the structure), you need to mount the fabric roller. You need to do this with two persons! Remove the black protection cap of the Connect&Go. Only when the sliders are fully fixed, a good connection with the Connect&Go technology is guaranteed. Then, slide the front cover on the box.

Attention!

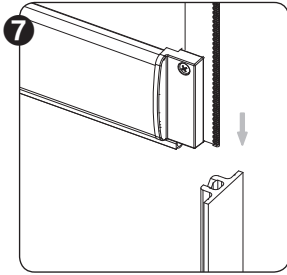
For the mounting of the fabric roller, we advise you to unroll the fabric roller partially, so the bottom rail has a supporting point for an easy installation.



Check the place of the motor, where the electrical connection should be made.



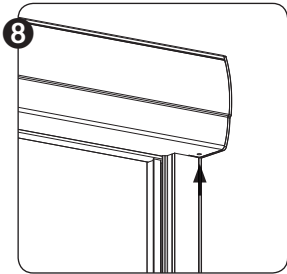
For a coupling side channel, first fit the fabric roller into coupling piece ①. Then slide the roller into support piece ② and secure the support piece to the end covers. First place the motor part side, then the bearing side. Don't forget to support the bottom bar.



Slide the fabric into the internal HPVC channel.

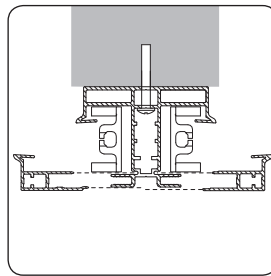
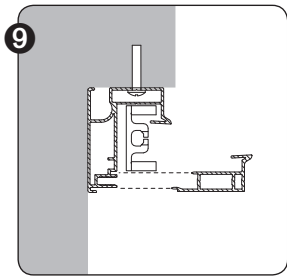
Check if the side channels are facing the right direction!

The V cut-out is positioned at the top of the side channel and the clicker is positioned at the bottom of the side channel.



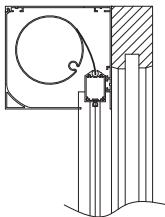
Single screen: close the underside of the box with two screws on the level of the end covers with a socket-head wrench 2,5 (ISO 7380 M4x10).

For a coupled screen in case of a Fixscreen 150^{EVO} the front cover of the box need to be fixated on the level of the coupled side channel.

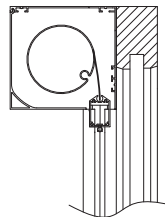


Screw the front part to the back part side channel to complete.

10 $FH \leq 2700$ mm



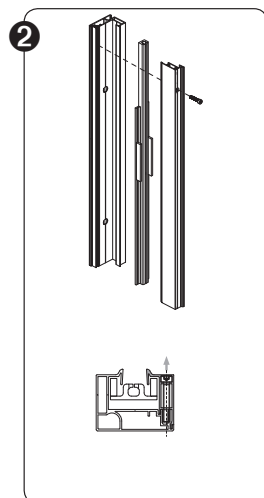
2700 mm < $FH \leq 6000$ mm



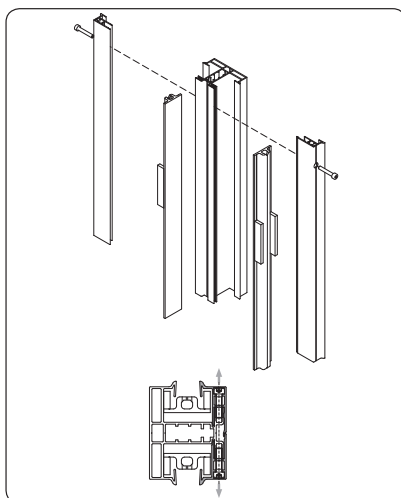
Check that the fabric moves unhampered and tension-free in the HPVC side channels. The bottom bar is retractable in case of height ($FH \leq 2,7$ m). So pay attention that the bottom bar does not touch the fabric during the upper limit setting ($FH > 2,7$ m).

5 • Mounting in case of installation method 5 & 9

- 1 In case the power supply is taken from indoors, drill a hole of 10 mm, to gain access inside the building or construction, in function of the location of the cable feed: B, F, H.

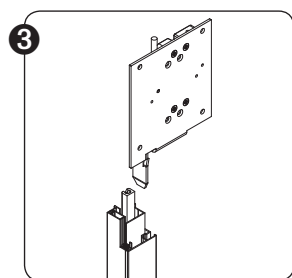


Side channel G



Coupling Side K

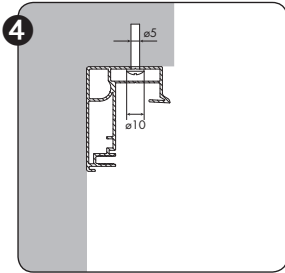
- Demount the 2-part side channel and in case of a coupled screen also the coupling side channel
- Use an Allen key type '3' for unscrewing the front part of the side channels: type 'G' en 'K'.
- A plastic end cap at the base of the side channels type 'G' en 'K' prevents the plastic side channel from sliding down. This end cap can be removed if the rail is resting on a horizontal surface.



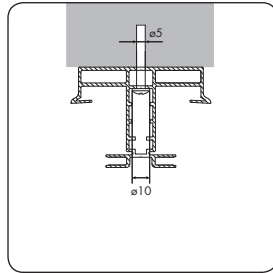
Retractable bottom rail:

The PVC-side channel extends from the aluminium side channel. If you shorten the aluminium side channel, you need to take into account the same overlength for the PVC side channel.

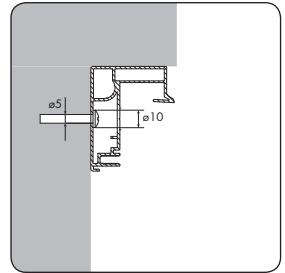




Mounting of side channel 'G' through the backside (ø5mm)



Mounting of coupling side channel 'K' through the backside

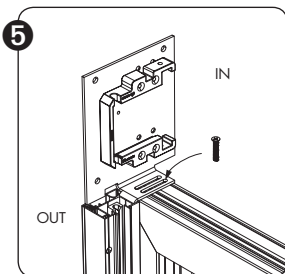


Mounting of side channel sideways 'G' (ø5mm)

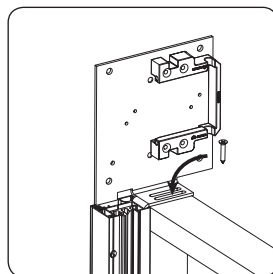
The closed side channel 'G' is standard pre-drilled (always the hole of ø10). There are 2 mounting options: through the side or through the back of the side channels. The hole of ø10 is always pre-drilled, the hole of ø5 mm still needs to be drilled. The coupling side channel is not pre-drilled and can only be placed through the backside. Respect the top position of the side channels! In case of a pre-drilled version: keep the first pre-drilled hole at a starting position of 125 mm from the topline. Keep a maximal distance of 750 mm between each sequential hole. Mount the side channels with the box as total system unto the window profile or construction.



The first hole is foreseen at a distance of **125 mm** from the top. After the first hole, the holes are pre-drilled sequential over a distance of **250 mm**.



Installation method 5



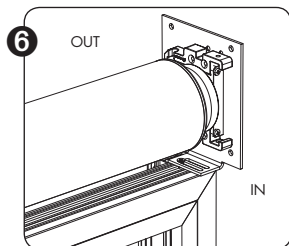
Installation method 9

In installation situation 5 & 9, the brackets and the side channels are mounted as in the diagram above and the fabric is slid into the plastic side channels after placing the window in the window opening. **Be sure to observe the correct direction of the side channels!**

The brackets must be secured to the window using a DIN 7982C ST3.5 x 25 A2 screw. Use a torx-screwdriver (T4)! Extra fixation sideways, if possible, is advisable.

Attention! Screws may not protrude more than 5 mm!

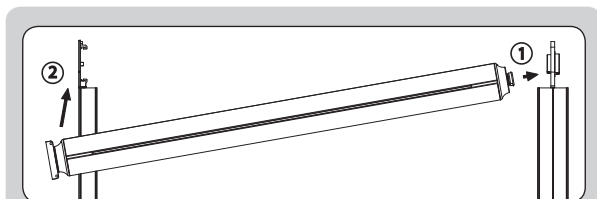
EN Fixscreen® 150 EVO (F)



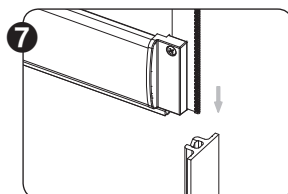
Slide the fabric roller back into its original position, with the screen downward. Due to Connect&Go this handling goes smoothly.

Always perform with 2 persons!

Once the fabric roller is fully secured, a proper connection with the Connect&Go technology can be assured. The end finishing around the fabric roller (on top) still needs to be done.

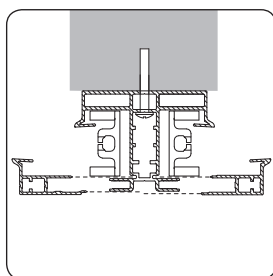
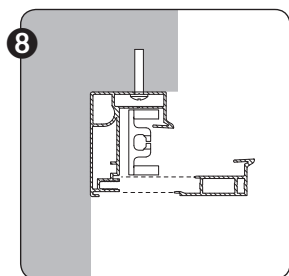


For a coupling side channel, first fit the fabric roller into coupling piece ①. Then slide the roller into support piece ② and secure the support piece to the end covers. First place the motor part side, then the bearing side (for a safer installation). Don't forget to support the bottom bar.

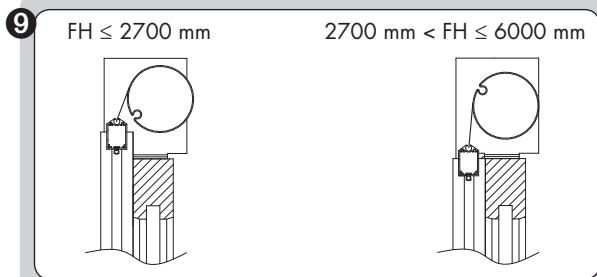


Slide the fabric into the internal HPVC channel.

Check if the side channels are facing the right direction!

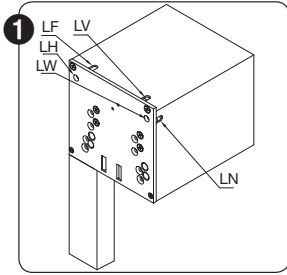


Screw the front part to the back part side channel to complete

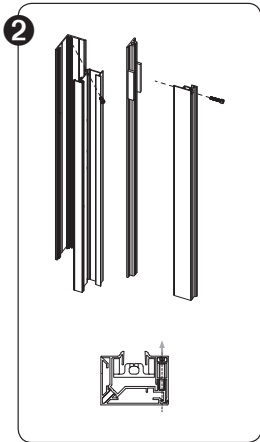


Check that the fabric moves unhampered and tension-free in the HPVC side channels. The bottom bar is retractable in case of height ($H \leq 2,7m$). So pay attention that the bottom bar does not touch the fabric during the upper limit setting ($H > 2,7m$).

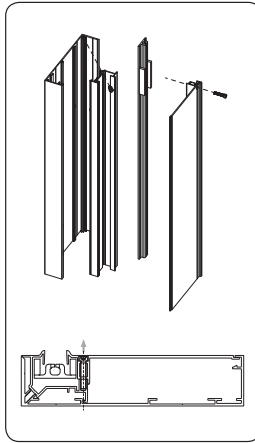
6 • Mounting in case of installation method 7A & 7B



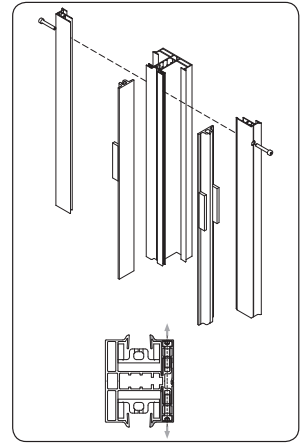
In case the power supply is taken from indoors, drill a hole of 10 mm, to gain access inside the building or construction, in function of the location of the cable feed: B, F, H, N, V & W.



Side channel G

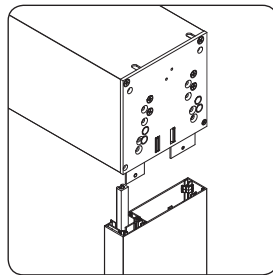
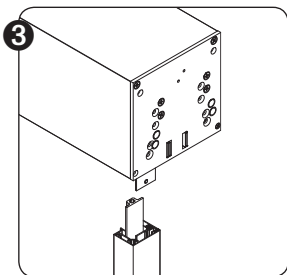


Side channel D



Coupling side channel K

- Demount the 3-part side channel and in case of a coupled screen also the coupling side channel (consists of 2 parts)
- Use an Allen key type '3' for unscrewing the front part of the side channels: type 'G', 'D' en 'K'.
- There is no plastic end cap at the bottom for a 3-part side channel.

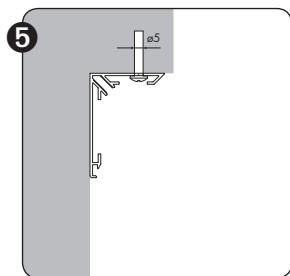


Retractable bottom rail:

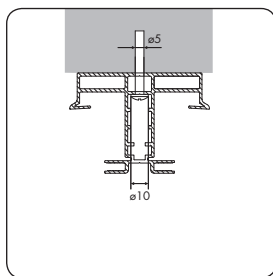
The PVC-side channel extends from the aluminium side channel. If you shorten the aluminium side channel, you need to take into account the same overlength for the PVC side channel.

- 4** Slide the empty box into the back part of the side channel.
Secure the box to the side channel using Allen key 2,5 (DIN 915 M5x10). Do this at both sides.

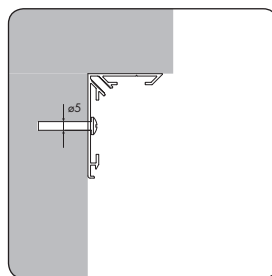
Place the back side of the side channel with the empty box into its final position.



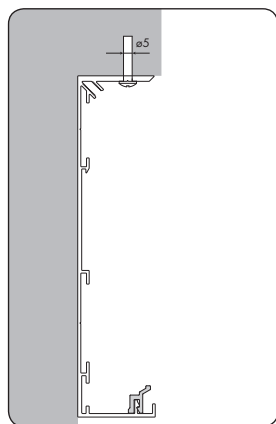
Mounting of side channel 'G' through the backside (ø5mm)



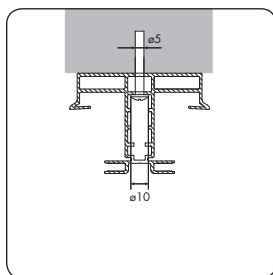
Mounting of coupling side channel 'K' through the backside



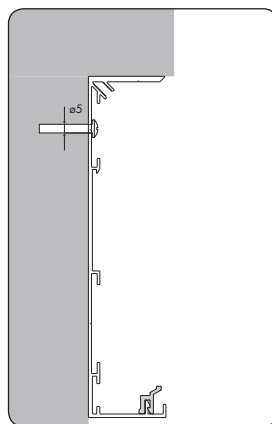
Mounting of side channel sideways 'G' (ø5mm)



Mounting of side channel 'D' through the backside (ø5mm)



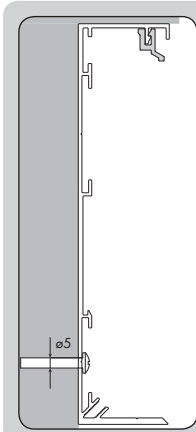
Mounting of coupling side channel 'K' through the backside



Mounting of side channel sideways 'D' (ø5mm)

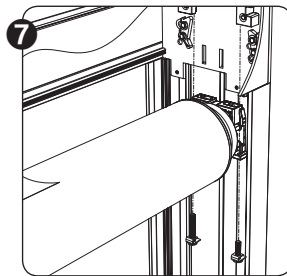
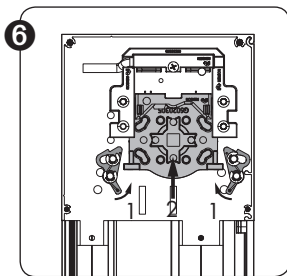


- The back part of the side channel is not pre-drilled. The intermediate part of the side channel is pre-drilled (see image above).
- Maintain maximum **125 mm** clearance from the top and bottom of the side-channel and allow a maximum distance of **750 mm** between sequential holes.
- The drillings need to be done as straight as possible to guarantee a good fastening of the side channels (certainly in case of high wind load)
- In case of deep side channel, it is advisable to perform the drilling from the outside.
- Take into account that in case of installation method 7, the side channels are placed in recess mounting position.



Warning! In case the box is installed vice versa (for example in case a mosquito screen is installed between the window and the screen/fabric). Pay attention that the window can be opened in the full width/height in order to adjust the upper and lower limits in case of a mechanical motor!

- o Single screen:
Limit adjustment at the side of the motor
- o Coupled screen (1 or 2 motors):
Limit adjustment on both sides of the screen

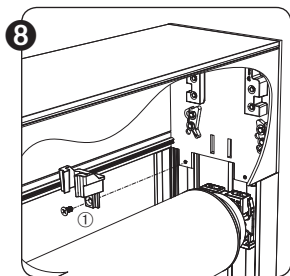


Remove the black protection cap of the Connect&Go.

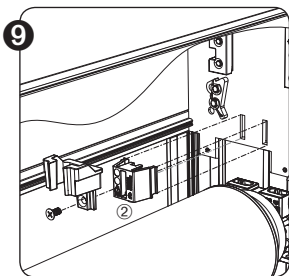
Push the fabric roller back into it's original position. Always perform with 2 persons! The security cams will automatically slide open.

Afterwards the security cams will be pulled back in closed position. The fabric roller is then automatically secured. Do not forget to screw the connecting pieces back onto the reversed U.

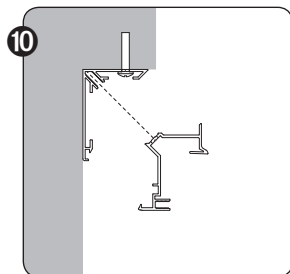
Once the fabric roller is fully secured, a proper connection with the Connect&Go technology can be assured. The end finishing around the fabric roller (on top) still needs to be done.



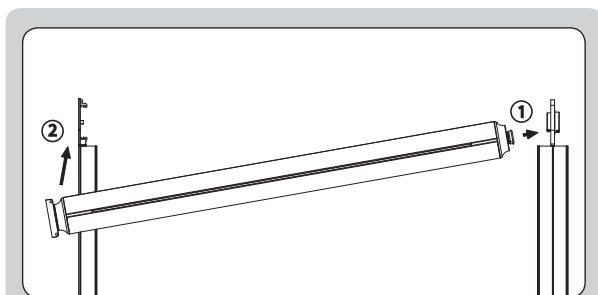
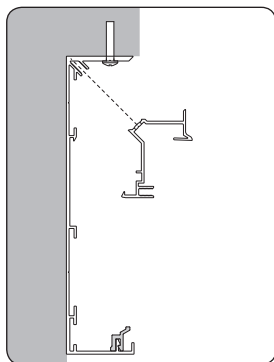
Tighten the screw of the guiding piece, in case of a retractable bottom bar ($H \leq 2700$ mm) ①.



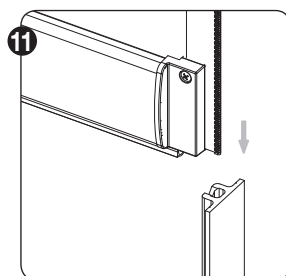
Click the clipping piece back in its former position. You will need this piece for screwing the cover plate back on the box (at the bottom of the box) ②.



Re-install the intermediate part of the side channel on the back part.

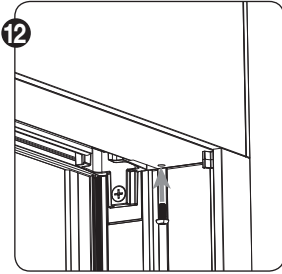


For a coupling side channel, first fit the fabric roller into coupling piece ①. Then slide the roller into support piece ② and secure the support piece to the end covers. First place the motor part side, then the bearing side (for a safer installation). Don't forget to support the bottom bar.

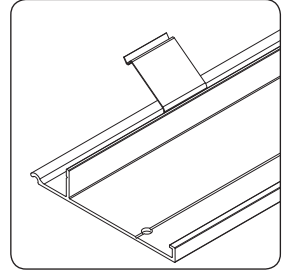


Slide the fabric into the internal HPVC channel.

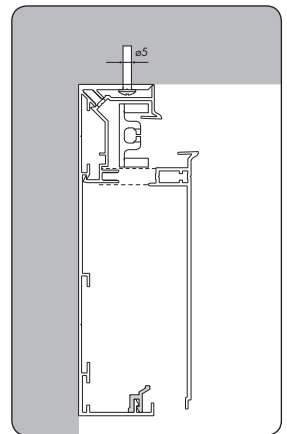
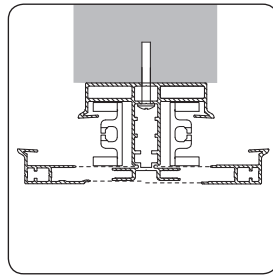
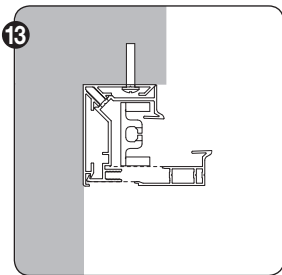
Make sure the V cut-out is positioned at the top of the side channel and the clicker is positioned at the bottom of the side channel



In case of a single screen the underside of the box closes with screws on the level of the end covers with a socket-head wrench 2,5 (ISO 7380 M4x10). In case of a coupled screen, the cover plate is additionally fixated on the level of the coupled side channel.



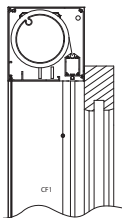
Screens > 4000 mm are provided with one or two flat springs to become a smooth alignment of the cover plate. By mounting the cover plate you need to pay attention, that this plate is perfectly connected to the box.



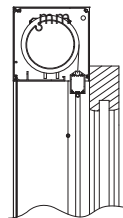
To finish you need to screw the front piece of the deep or closed side channel onto the back piece.

The deep side channel has black PVC clips every 400 mm.

14 $FH \leq 2700$ mm

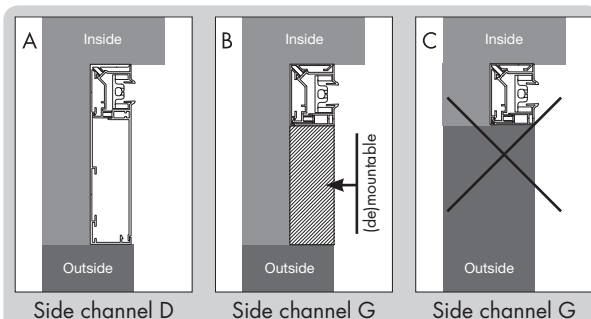


2700 mm < $FH \leq 6000$



Check that the fabric moves unhampered and tension-free in the HPVC side channels. The bottom bar is retractable in case of height ($H \leq 2,7$ m). So pay attention that the bottom bar does not touch the fabric during the upper limit setting ($H > 2,7$ m).

- 15 Finish with the installation of the PVC clips and the attachment of the cover plate.
For a width > 4000 mm 1 or 2 flat springs are provided to centre and balance the box.



Remark:

When using side channel D (standard for installation method 7), the (dis)mounting of the fabric roller is still possible.

* To be able to disassemble the fabric roller barrel from beneath, the client must foresee something underneath the headbox that can be dismantled when choosing the narrow side channel G. The dimensions of this piece of cladding must be: a minimum width corresponding with the depth of the box minus the depth of narrow side channel and a minimal height of 800 mm in case of maximum width of 6000 mm, single screen.

7 • Electrical control

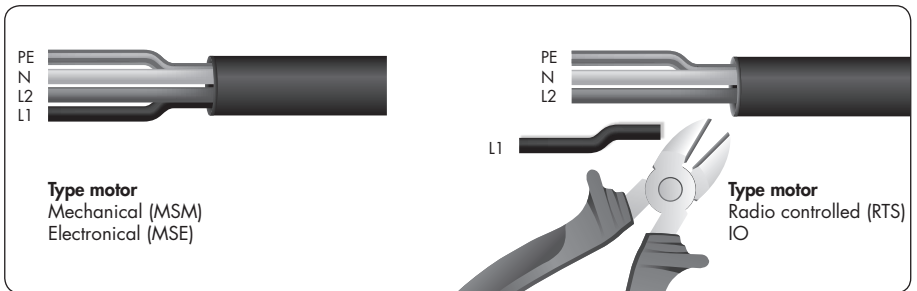
7.1 • The technical features of the motor

Category	Rating
Power supply	230 Volt AC
Current	0,4 to 1.5 Amps (depends on motor type)
Output	90 to 300 Watt (depends on motor type)
Protection class	IP 44
Max. operating time	Approx. 3 à 5 minutes

7.2 • The features of the electrical power connection

Category	Rating
Residual-current device	300mA
Circuit breaker	10 Ampère (Max. 8 Motors per circuit breaker) (See specifications for rated current of the motor.)

7.3 • In case of a black cable with UV resistant sheath (type: RR-F/RN-F)



In case of a radio-controlled motor (RTS) or IO Home motor, the black core needs to be cut (the black core does not have a functionality in case of this type of motors).

Codification cores:	
Blew core	N (Neutral)
Black core	L1 (Direction 1)
Brow core	L2 (Direction 2)
Yellow and green core	PE (Eearth)

8 • Motor adjustment (upper/lower limits)

ADJUST UPPER AND LOWER END POINT SETTING AGAIN!

The upper end point is adjusted in the factory.

8.1 • Adjusting upper end point:

Upper end point is adjusted in the factory of Renson and the bottom bar, including the sealing strip, is fully retractable ($FH \leq 2700\text{mm}$) or partly retractable ($2700 < FH \leq 6000\text{mm}$).

In case of a retractable bottom bar, make sure it does not hamper the fabric.

Adjust the upper end point for end use.

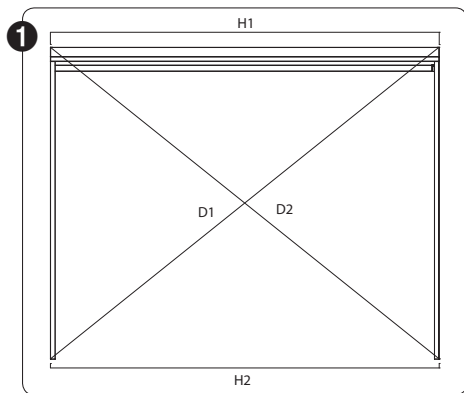
8.2 • Adjusting lower end point:

The lower end point is adjusted at $\pm 400\text{ mm}$ from the bottom of the box. Adjust the lower end point completely until the bottom of the screen, with a margin of 10 mm (for the sealing strip).

The adjustment depends of the motor type.

We refer to the Renson Installation document for Motor end point adjustment vertical screens, Somfy manual or Renson Motor Manual. During the adjustment of the motor, the upper and lower endpoint needs to be defined.

9 • Final check for a single screen



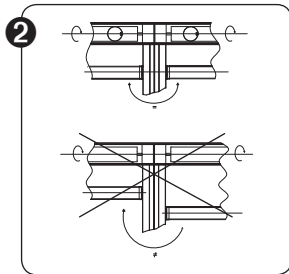
Before starting the motor, check the set-up is square. The diagonals (D1 and D2) and parallels (H1 and H2) should be as equal as possible for the fabric to properly unwind.

$$D1 = D2 \text{ and } H1 = H2$$

- 2 Put back the front section of the side channels and coupling side channel (Allen key no. 3).
- 3 If the motor cable is visible and installed outdoors, the cable needs to be protected by conduit or trunking which is sun resistant.
- 4 Check that the end points are set. If they are not set, set the end points so the motor automatically stops in the desired highest and lowest position.
- 5 **Make sure to set the lower end point at a few mm from the end of the side channels so the fabric remains at the correct tension.**
- 6 Check that all screws, bolts and nuts are firmly tightened.
- 7 Roll the screen up and down several times to ensure proper operation.

10 • Final check for coupled Fixscreen®

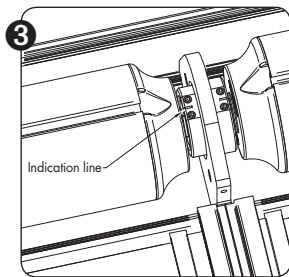
- 1 See point 1 (final check single screen)



Check that the bottom rails are at the same height. If not, they can be adjusted on the non-motorised fabric roller.

Both must be symmetrical, i.e. the fabric grooves of both fabric rollers must align perfectly.

The screens must also be wound on an equal number of turns, so both bottom rails align perfectly.



Release the Allen head screws at the side of the lower fabric roller and turn the roller so the fabric grooves are accurately aligned.

Make sure that the reference line on the coupling piece is never outside the indicated area on the fabric roller end piece.

Put back the front section of the coupling side channels (Allen key no. 3).

- 4 If the motor cable is visible and installed outdoors, the cable needs to be protected by conduit or trunking which is sun resistant.
- 5 Check that the end points are set. If they are not set, set the end points so the motor automatically stops in the desired highest and lowest position.

Make sure to set the lower end point at a few mm from the end of the side channels so the fabric remains at the correct tension.

Check that all screws, bolts and nuts are firmly tightened

- 6 Lower the bottom rail to its lowest position. Check that both bottom rails are aligned at the same height. If not, please go back to 2.

11 • Maintenance (See also our warranty certificate*)

The system does not need much maintenance, but for years of enjoyment, we advise the following:

- If the fabric becomes wet in a sudden storm, you can still roll it up and unroll it later to dry when the weather is better. However, avoid having the wet fabric rolled up for more than three days to prevent formation of mould and spots.
- Before cleaning, remove any loose dirt with a brush or vacuum cleaner. You can then use a cleaning product (avoid caustic products) and warm water to remove the remaining dirt. Always rinse the fabric after cleaning. Avoid cleaning in full sunlight: if soapy water dries quickly, it can leave spots on the fabric.

Do not use aggressive abrasives.

- Crystal screen may only be cleaned with clean lukewarm water ($\pm 30^{\circ}\text{C}$)
- If anodised or enamelled profiles become dirty, they can be cleaned with warm water and a gentle-acting cleaning product. Never use aggressive products, abrasive sponges or other abrasive media. We also advise against using high-pressure equipment.
- Swivelling or rotating parts should be lubricated annually. Use a dry lubricant for this (Veidec Dry Lube (G6002790)).
- After cleaning (remove twigs and leaves), plastic sliding sleeves can be lubricated with a dry lubricant (Veidec Dry Lube (G6002790)).
- Frequently control your product on twigs, leaves, bird nests, etc. and remove them. Maintain the product "as a good keeper".
- As the manufacturer, we recommend having a regular technical inspection by your installer: Annually at public utility building and at your private home.
- Always use original parts from the manufacturer.

Important to know:

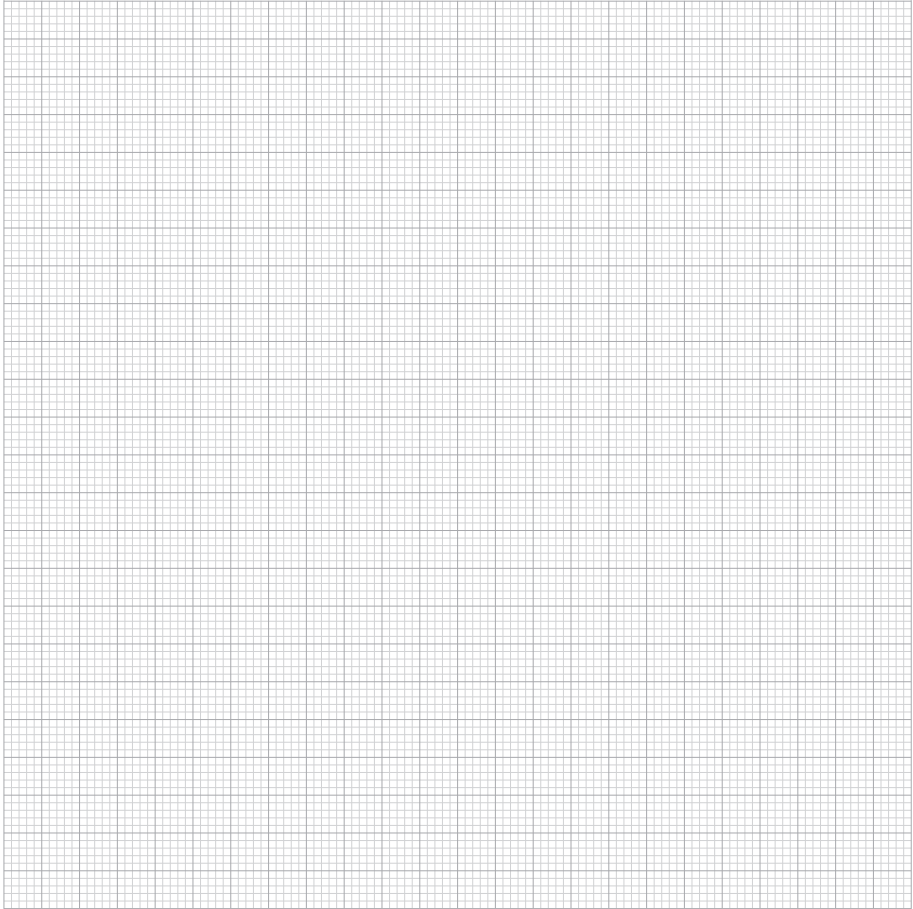
- The main connection should be made by a qualified electrician in accordance with applicable standards.
- Minor colour variations may occur during the manufacturing process between the colour guides and the profiles of the sunprotection screen. There may also be minor colour differences between components and profiles.
- The fabric may exhibit slight colour nuances and imperfections.
- Because the fabric is rolled up, it can form folds or creases.
- Fabrics that contain crystal windows can expand, shrink and/or show folds or creases caused by differences in temperature or fabric tension.
- Over time, the colour of the fabric / crystal window may fade slightly, depending on the chosen colour and design.
- In the case of straight screens, where the fabric hangs down vertically because of the weight of the bottom rail or a tensioning system, wrinkles can form in the fabric depending on the type of screen

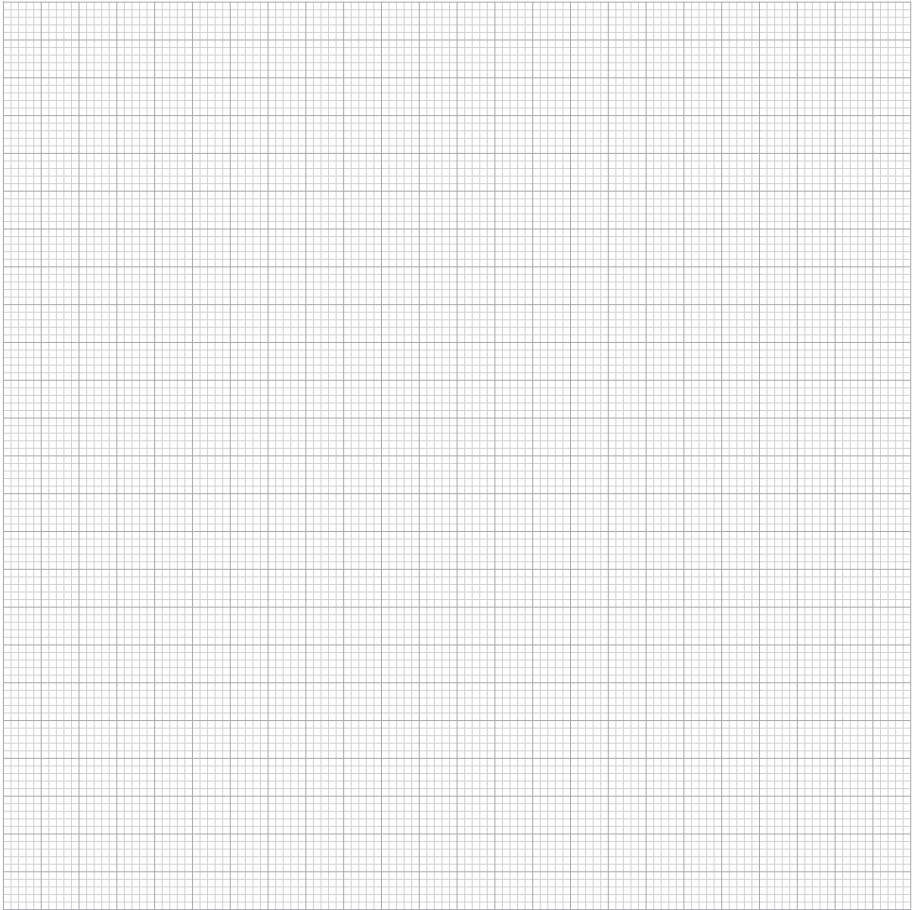
* This information does not replace the warranty certificate.

12 • Discard the product

Your screen can fully be recycled. You should inform yourself about the environmental regulations in your city or recycling station. If you demount your screen, it should be tensionless.

The materials should be separated by the product's destruction. Combustible materials should be separated from non-combustible materials by the product's destruction.







Creating healthy spaces

Renson®: Ihr Partner in Lüftung und Sonnenschutz

Renson®, mit Hauptsitz in Waregem (Belgien), ist in Europa Trendsetter im Bereich der natürlichen Lüftung und des Sonnenschutzes.

- **Creating healthy spaces**

Basiert auf einer langjährigen Erfahrung (seit 1909) entwickeln wir energieeffiziente Gesamtlösungen, die ein gesundes und komfortables Innenklima in Gebäuden ermöglichen.

Unser bemerkenswerter gemäß dem Healthy Building Konzept gestalteter Hauptsitz spiegelt perfekt die Philosophie und Mission des Unternehmens wieder.

- **No speed limit on innovation**

Ein multidisziplinäres Team von über 70 Mitarbeitern im Bereich der Forschung und Entwicklung optimiert ständig unsere bestehenden Produkte und entwickelt innovative Gesamtlösungen für die Marktanforderungen.

- **Strong in communication**

Der Kontakt mit dem Kunden ist äußerst wichtig. Ein eigenes Team von über 70 Vertriebsmitarbeitern weltweit und ein starkes internationales Partnernetz beraten die Kunden vor Ort. In EXIT 5 in Waregem können die Kunden unsere Lösungen hautnah erfahren und durch kontinuierliche Schulungen unserer Partner sorgen wir für eine stetige Weiterbildung.

- **A reliable partner in business**

Dank unserer umweltfreundlichen und modernen Produktionsprozesse (wie z.B. eigener automatischer Pulverbeschichtungs- und Eloxalanlagen, Kunststoff-Spitzgussmaschinen, Werkzeugbau) mit einer Gesamtfläche von 95.000 m² können wir unseren Kunden stets optimale Qualität und Dienstleistung garantieren.

Renson®: your partner in ventilation and sun protection

Renson®, headquartered in Waregem (Belgium), is a trendsetter in Europe in natural ventilation and sun protection.

- **Creating healthy spaces**

From 1909, we've been developing energy efficient solutions assuring a healthy and comfortable indoor climate.

Our remarkable headquarters - built according to the 'Healthy Building Concept' - is a beautiful example portraying our corporate mission.

- **No speed limit on innovation**

A multidisciplinary team of more than 70 R&D employees continually optimize our products and develop new and innovative concepts.

- **Strong in communication**

Contact with the customer is of the utmost importance. A group of 70 in-the-field employees worldwide and a powerful international distribution network are ready to advise you on site. EXIT 5 at Waregem gives you the possibility to experience our products on your own and provides necessary training for installers.

- **A reliable partner in business**

We can guarantee our customers optimal quality and service thanks to our environmentally friendly and modern production sites (with automated powder coating line, anodisation line, uPVC injection molding machinery and mold making shop) covering an area of 95.000 m².

Dealer



Renson® behält sich das Recht vor, technische Änderungen an den im Folgenden behandelten Produkten vorzunehmen. Die meist aktuelle Version dieser Broschüre kann aufgeladen werden von www.renson.eu

Renson® reserves the right to make technical changes to the products shown.

The most recent versions of our brochures can be downloaded from www.renson.eu



Renson® Headquarters
Maalbeekstraat 10 • IZ 2 Vijverdam • B-8790 Waregem • Belgium
Tel. +32 (0)56 62 71 11 • Fax +32 (0)56 60 28 51
info@renson.be • www.renson.eu

