

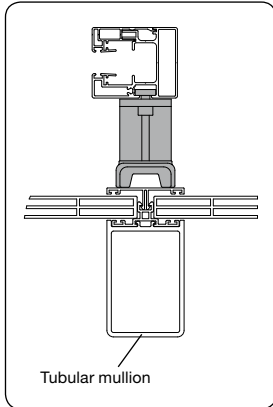
Index

1 • Installing the side channels using assembly fixtures	15
2 • Installing the side channels directly on the conservatory or light panel	17
3 • Installing the channels vertically in front of the window.....	18
4 • Positioning the cord and adjusting the cord tension	20
5 • Final check	21
6 • Coupled screens	21

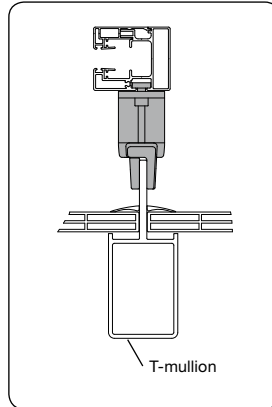
1 • Installing the side channels using assembly fixtures

1 Fasten the assembly fixtures supplied, depending on the type of veranda, glass (or polycarbonate (PC)) above or below. Make sure the screws are sufficiently tightened for proper anchoring in the mullion.

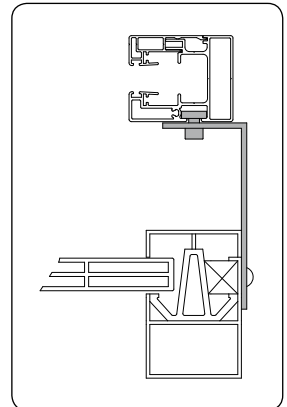
Where possible, we recommend for aesthetic reasons to fix the assembly feet on the side of the veranda on the mullion, and not on the visible side.



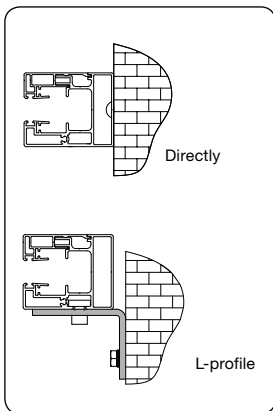
Fixing the assembly feet to a tubular mullion (glass above)



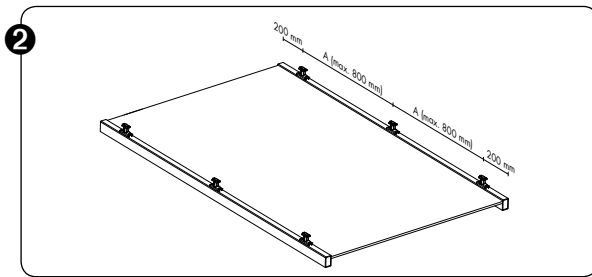
Fixing the assembly feet with a T-mullion (glass below)



Fixing the side channels on the sides of the veranda

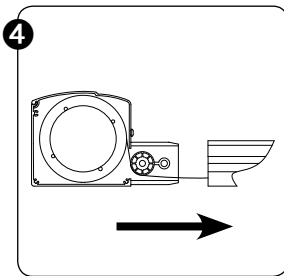


Wall fastening of the side channels

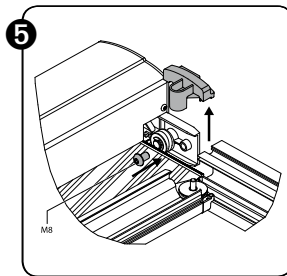


Determine the fastening points for the feet, taking into account the distances shown in the next figure. The first foot at 200 mm, the last foot at 200 mm from the end of the veranda. The other foot in the middle of the side channel.

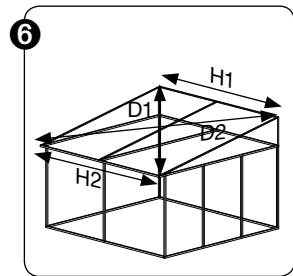
3 Slide the side channels across the assembly feet to their final position. Tighten them lightly for now.



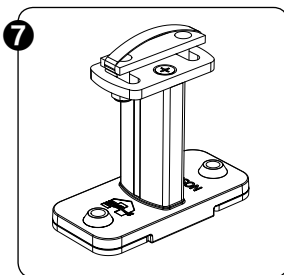
Slide the cassette onto the side channels, ensuring that the cord passes under the alignment wheel.



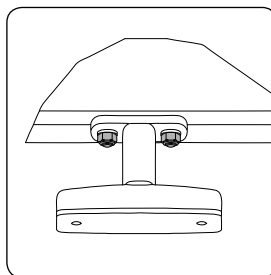
Remove the end pieces of the bottom rail on both sides. Secure the side brackets on the side channel using Allen wrench 5 (M8-ISO 7380).



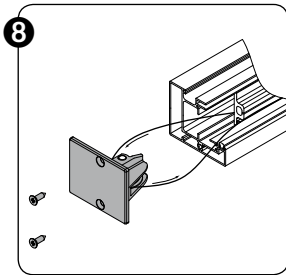
Place the side channels in their proper position. Check the parallelism and diagonals between the side channels ($D1 = D2$ and $H1 = H2$). They must be identical! This is key to be able to smoothly roll up the fabric.



Install the springs on the mounting feet to prevent the side channel from slipping during installation.



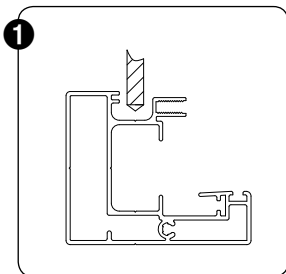
Firmly fasten the side channels to the assembly feet using spanner 10 (DIN985 nuts).



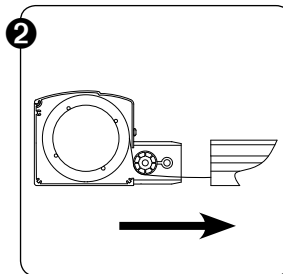
Place the cord in the pulley block. **Insert the cord under the wheel in the direction of the arrow indicated on the pulley block.** Install the pulley block on the lower part of the side channel using the DIN 7982 ST3.9x16 screws provided.

9 Refer to item 4 to further adjust the tension.

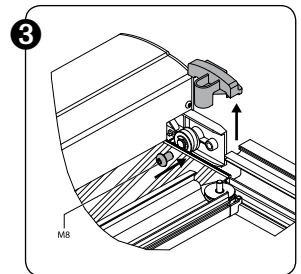
2 • Installing the side channels directly on the conservatory or light panel



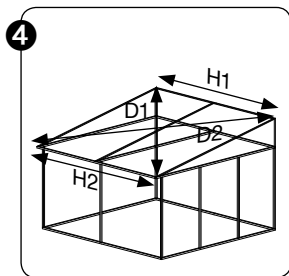
Pre-drill the side channel. First use a 5.5 diameter drill (through 3 grooves), then a 9.5 diameter drill (through 2 grooves). **Stay 100 mm clear of the top and bottom, taking into account a maximum clearance of 500 mm in between.**



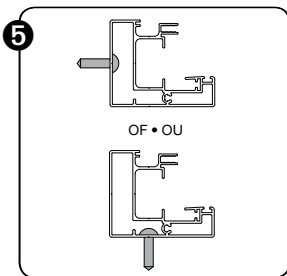
Slide the cassette onto the side channels, ensuring that the cord passes under the alignment wheel.



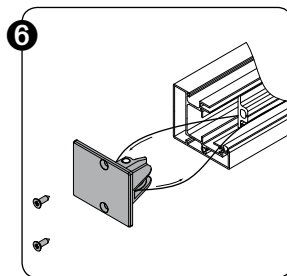
Remove the end pieces of the bottom rail on both sides. Secure the side brackets onto the side channel using Allen wrench 5 (M8-ISO7380).



Place the system on the conservatory or light panel and put the side channels into their proper position. Ensure that the system remains immobilized. **Check the parallelism and diagonals between the side channels** ($D1 = D2$ and $H1 = H2$). Mark the location of the fastening holes on the conservatory or light panel. Remove the system and drill the holes in the conservatory or light panel.



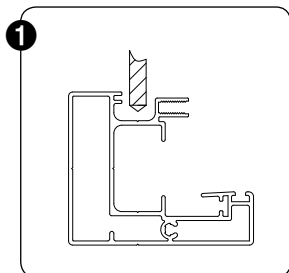
Place the entire system back on the conservatory or light panel and secure the side channels using the screws provided, i.e. DIN 7981 ST4.8x25.



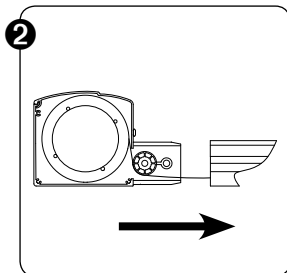
Place the cord in the pulley block. **Insert the cord under the wheel in the direction of the arrow indicated on the pulley block.** Install the pulley block on the lower part of the side channel using the DIN 7982 ST3.9x16 screws provided.

7 Refer to item 4 to further adjust the tension.

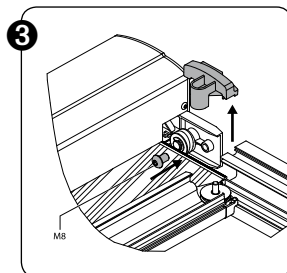
3 • Installing the channels vertically in front of the window



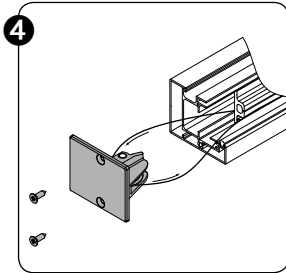
Pre-drill the side channel. First use a 5.5 diameter drill (through 3 grooves), then a 9.5 diameter drill (through 2 grooves). **Stay 100 mm clear of the top and bottom, taking into account a maximum clearance of 500 mm between them.**



Slide the cassette onto the side channels, ensuring that the cord passes under the alignment wheel.

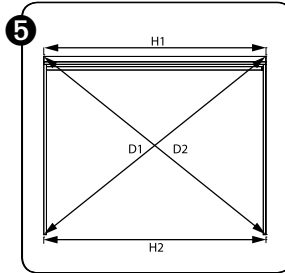


Remove the end pieces of the bottom rail on both sides. Secure the side brackets onto the side channel using Allen wrench 5 (M8-ISO 7380).



Place the cord in the pulley block. **Insert the cord under the wheel in the direction of the arrow indicated on the pulley block.**

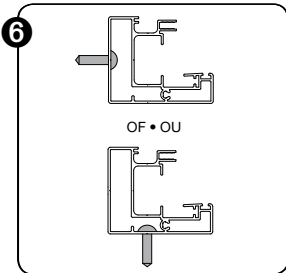
Install the pulley block on the lower part of the side channel using the DIN 7982 ST3.9x16 screws provided.



Place the system against the window and move the side channels into their proper position. Ensure that the system remains immobilized in its upright position.

Check the parallelism and diagonals between the side channels ($D1 = D2$ and $H1 = H2$).

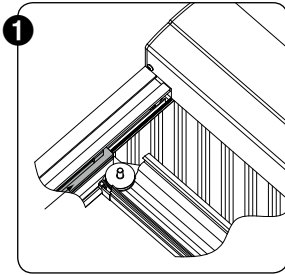
Mark the location of the fastening holes on the wall or window (taking care not to damage the cord). Remove the system and drill the holes in the wall or window.



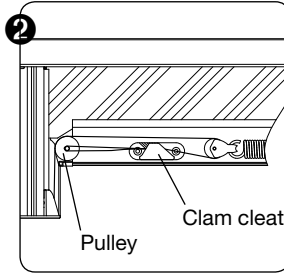
Place the entire system back on the wall or window and secure the side channels using the screws provided, i.e. DIN 7981 ST4.8x25.

7 Refer to item 4 to further adjust the tension.

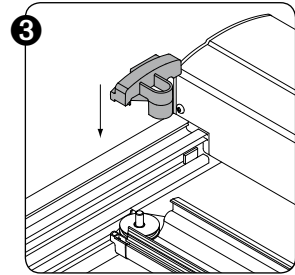
4 • Positioning the cord and adjusting the cord tension



1 Slide the internal HPVC guide in the bottom rail and across the zip, which is welded onto the fabric.

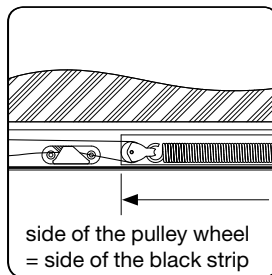
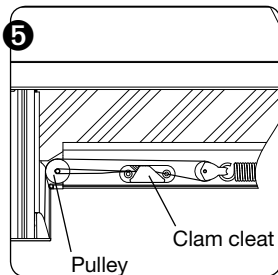


2 Take the cord, move it over the wheel and put it in the bottom rail end piece. Then move it over the pulley to the clam cleat. Fix the cord into the clam cleat, without putting pressure on the spring yet.



3 Install the bottom rail end piece.

4 Close the side channels and secure them using the M4x25 screws provided. (Allen wrench 3) Fully unroll the screen into its end position (in this position the entire screen is visible).



5 Prestress the springs. Remove the cord from the clam cleat and pull out the spring, so the pulley is aligned with the black strip. Place the cord into the clam cleat and secure cord to the bolt (check that the side of the pulley wheel is aligned with the side of the black strip).

6 Roll the fabric up and down twice, checking that the tension is still adequate (check that the side of the pulley wheel is aligned with the side of the black strip).

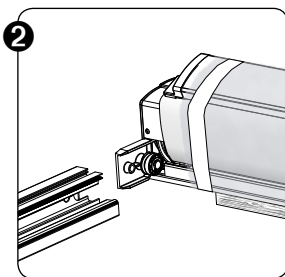
7 Remove the screw from the spring plate. Close the bottom rail.

5 • Final check

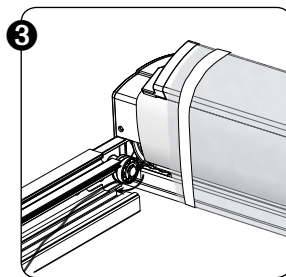
- 1 Check that the end points are programmed. If they are not programmed, set the end points so the motor automatically stops in its desired top and bottom position. (See documents on motor adjustment.)
- 2 If the motor cable is visible and installed outdoors, the cable needs to be protected by conduit or trunking which is sun resistant.
- 3 Roll and unroll the fabric several times to ensure its proper operation. During movement of the screen a noise may occur which is inherent to the system.
- 4 Check that all screws, bolts and nuts are firmly tightened!

6 • Coupled screens

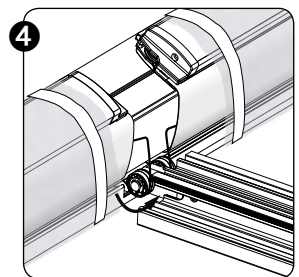
- 1 Place the side channels (side channel and coupling side channel) on the conservatory or light panel (see single Topfix® assembly instructions).



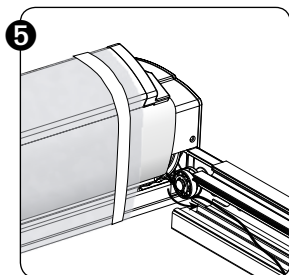
Place the Topfix® with packaging and board on the conservatory or light panel. Remove the board from the packaging (it may be removed at a later time if assembly feet are used).



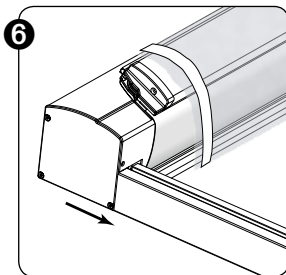
Slide the Topfix® partially into the side channel on 1 side. Do not fully slide it in yet! Ensure that the cord passes neatly under the alignment wheel.



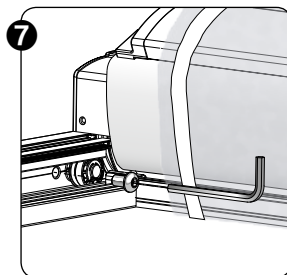
Slide the Topfix® partially on the coupling side channel in the middle. Do not fully slide it in yet! Ensure that the 2 cords pass neatly under the alignment wheel.



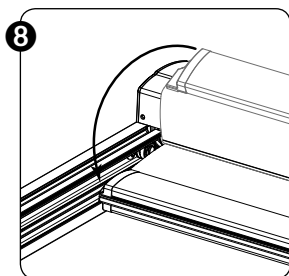
5 Slide the Topfix® into the side channel on the other side. Ensure that the cord passes neatly under the alignment wheel.



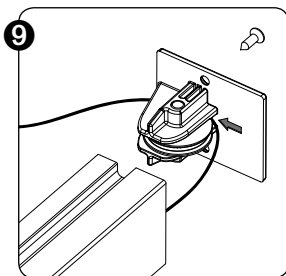
6 Slide de Topfix® fully into the side channels.



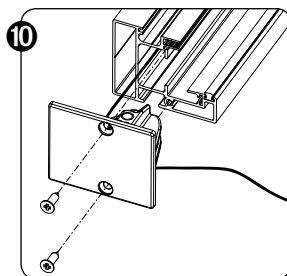
7 Screw the Topfix® cassette onto the side channels using the supplied bolt and Allen key 5 (M8ISO7380).



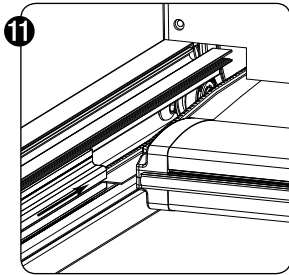
8 Remove the Topfix® packaging and place the bottom rails in the side channels.



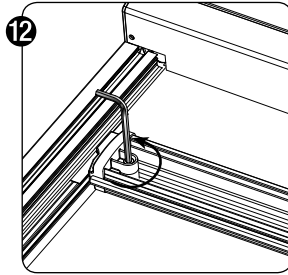
9 Move the cords down via the side or coupling side channel and through the pulley block (in the direction of the arrow indicated on the pulley block).



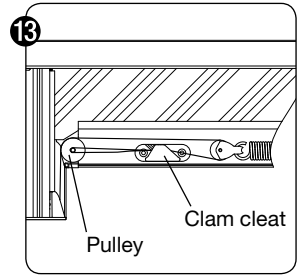
10 Fasten the pulley block onto the side channel.



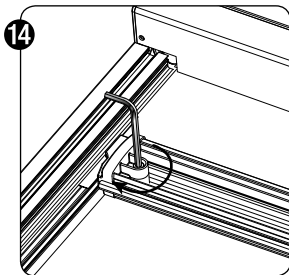
11 Place the internal HPVC guide in the side channel. Ensure that it passes properly over the zip.



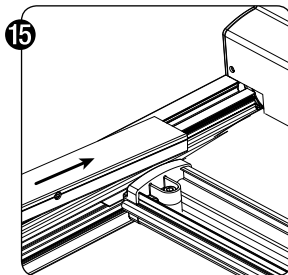
12 Open the end pieces of the bottom rail.



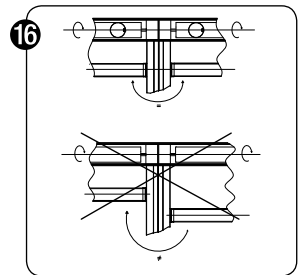
13 Bring the cord from the pulley block into the bottom rail, via the end pieces. Next, position the cord via the pulley, which is fixed to the springs, to the clam cleat. Do not put any tension on the springs yet!



14 Repeat this for the remaining cords and close the end pieces of the bottom rail.

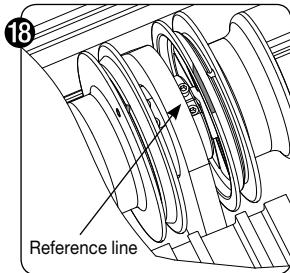


15 Close the side channels.



16 Check that the bottom rails are positioned at the same height before adding tension. If so, proceed to adjusting the tension.

17 If not, this can be adjusted on the non-motorized fabric roller. Both must be symmetrically linked, i.e. the fabric slots of both fabric roller barrels must be positioned perfectly opposite one another. The fabric must also be wound on an equal number of turns, so both bottom rails are positioned perfectly opposite one another.



Release the socket screw on the side of the lower fabric roller and turn it so the fabric slots are positioned straight opposite one another. Make sure that the reference line on the link piece never exceeds the indicated area on the cord pulley.

- 19 Refasten the socket screws.
- 20 Lower the bottom rail to its lowest position.
- 21 Put tension on the system: see item 4 5 : positioning the cord and adjusting cord tension.
- 22 The tension on both systems should be identical, so the bottom rails are positioned at the same height. If not, please go back to 5 10.
- 23 Remove the screw from the spring plate. Close the bottom rail.
- 24 Final check: see item 5.



Creating healthy spaces

Renson®: Ihr Partner in Lüftung und Sonnenschutz

Renson®, mit Hauptsitz in Waregem (Belgien), ist in Europa Trendsetter im Bereich der natürlichen Lüftung und des Sonnenschutzes.

• **Creating healthy spaces**

Basiert auf einer langjährigen Erfahrung (seit 1909) entwickeln wir energieeffiziente Gesamtlösungen, die ein gesundes und komfortables Innenklima in Gebäuden ermöglichen.

Unser bemerkenswerter gemäß dem Healthy Building Konzept gestalteter Hauptsitz spiegelt perfekt die Philosophie und Mission des Unternehmens wieder.

• **No speed limit on innovation**

Ein multidisziplinäres Team von über 70 Mitarbeitern im Bereich der Forschung und Entwicklung optimiert ständig unsere bestehenden Produkte und entwickelt innovative Gesamtlösungen für die Marktanforderungen.

• **Strong in communication**

Der Kontakt mit dem Kunden ist äußerst wichtig. Ein eigenes Team von über 70 Vertriebsmitarbeitern weltweit und ein starkes internationales Partnernetz beraten die Kunden vor Ort. In EXIT 5 in Waregem können die Kunden unsere Lösungen hautnah erfahren und durch kontinuierliche Schulungen unserer Partner sorgen wir für eine stetige Weiterbildung.

• **A reliable partner in business**

Dank unserer umweltfreundlichen und modernen Produktionsprozesse (wie z.B. eigener automatischer Pulverbeschichtungs- und Eloxalanlagen, Kunststoff-Spitzgussmaschinen, Werkzeugbau) mit einer Gesamtfläche von 95.000 m² können wir unseren Kunden stets optimale Qualität und Dienstleistung garantieren.

Renson®: your partner in ventilation and sun protection

Renson®, headquartered in Waregem (Belgium), is a trendsetter in Europe in natural ventilation and sun protection.

• **Creating healthy spaces**

From 1909, we've been developing energy efficient solutions assuring a healthy and comfortable indoor climate.

Our remarkable headquarters - built according to the 'Healthy Building Concept' - is a beautiful example portraying our corporate mission.

• **No speed limit on innovation**

A multidisciplinary team of more than 70 R&D employees continually optimize our products and develop new and innovative concepts.

• **Strong in communication**

Contact with the customer is of the utmost importance. A group of 70 in-the-field employees worldwide and a powerful international distribution network are ready to advise you on site. EXIT 5 at Waregem gives you the possibility to experience our products on your own and provides necessary training for installers.

• **A reliable partner in business**

We can guarantee our customers optimal quality and service thanks to our environmentally friendly and modern production sites (with automated powder coating line, anodisation line, uPVC injection molding machinery and mold making shop) covering an area of 95.000 m².

Dealer



Renson® behält sich das Recht vor, technische Änderungen an den im Folgenden behandelten Produkten vorzunehmen. Die meist aktuelle Version dieser Broschüre kann aufgeladen werden von www.renson.eu

Renson® reserves the right to make technical changes to the products shown. The most recent versions of our brochures can be downloaded from www.renson.eu



Renson® Headquarters
Maalbeekstraat 10 • IZ 2 Vijverdam • B-8790 Waregem • Belgium
Tel. +32 (0)56 62 71 11 • Fax +32 (0)56 60 28 51
info@renson.be • www.renson.eu

