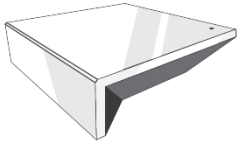


AUTOMATE™

QUICK START GUIDE Automate™ Crestron INTERGRATION SUPPORT



AUTOMATE PULSE HUB 2 OVERVIEW

Take your Automate experience to the next level by integrating Automate motorized shades into CONTROL4 Smart Home control systems. The Automate Pulse is a rich integration supports discrete shade control and features a two-way communication system offering real time shade position and battery level status. The Automate Pulse Hub 2 supports Ethernet Cable (CAT 5) and Wireless Communication 2.4GHz) for home automate integration using the RJ45 port conveniently located on the back of the hub. Each hub can support integration of up to 30 shades.

GETTING STARTED:

In order to integrate your motorized window treatments with Crestron, you will need to have:

- Downloaded the free Automate Pulse 2 via the Apple App Store (available under iPhone /iPad apps) or the Google Play Store.
- Purchased one or more Automate Pulse Hub 2 depending on size of the space and additional repeaters if is required.
- Integrated your motorized window treatments onto Automate Pulse app 2.

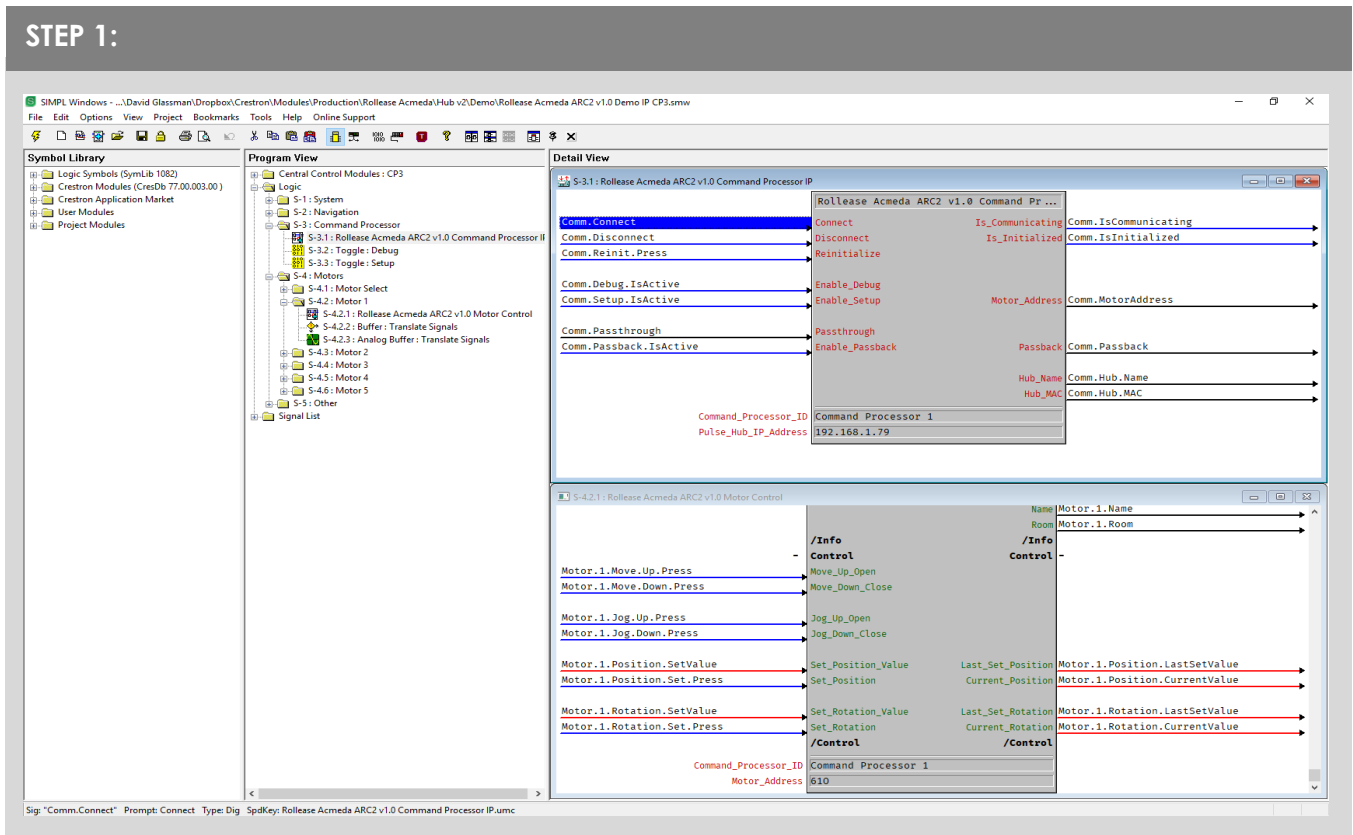
INSTRUCTIONS INCLUDED:

- Set up instructions for both the Automate Pulse app 2 & Automate Pulse Hub 2.
- Crestron Driver Installation Instructions
- Crestron Driver Guide
- Integration Diagram
- Integration FAQ's

CRESTRON HUB DRIVER INSTALLATION SECTION:


1. Find Rollease Acmeda ARC2 module in the Crestron Application Marketplace.
2. Unzip folder and open the Rollease Acmeda ARC2 v1.0 Demo IP CP3.smw file in SIMPL Windows.

STEP 1:



3. Locate the Rollease Acmeda ARC2 v1.0 Command Processor IP symbol in the SIMPL Windows program and replace the current IP address on the Pulse_Hub_IP_Address parameter with the actual IP address of your hub.
4. Comment out the entire "Motors" subfolder in the example program.
5. Compile and load the example program to your Crestron processor.
6. Open the Rollease Acmeda ARC2 v1.0 Demo XPanel.c3p file to open the XPanel simulator on your computer (you may need to install Adobe Air first with the included CrestronXPanel installer files).
7. Once the XPanel opens, click Options Host Settings in the top menu and enter the IP address of your Crestron processor in the Hostname/IP Address field and hit connect. This will connect your XPanel to your processor and allow for using the XPanel as a simulator in place of a physical touchpanel.
8. The module will automatically attempt to communicate with the hub when the program loads. Once communication is established with the hub, the Communicating indicator on the top right of the XPanel will illuminate. If it does, proceed to the next steps. If it does not, verify the IP address you entered in SIMPL Windows is correct and that the hub and Crestron processor are on the same network.
9. On the Command Processor tab in the XPanel, click the "Setup" button so it illuminates blue.
10. Using a remote or the Rollease Acmeda app, move each shade to initiate a response (in order to identify each).
11. The address of the last motor that moved/responded will automatically populate in the Motor Address field on the XPanel. Move each motor to identify each address.

STEP 2:



HUB NAME My House
HUB MAC ADDRESS 24:0a:c4:27:73:34

COMMUNICATING ●
INITIALIZED ●


COMMAND PROCESSOR

INITIALIZE DEBUG SETUP

MOTOR ADDRESS


91D

COMMAND PROCESSOR MOTOR CONTROL




12. Once you have the address for all your desired motors, uncomment the entire "Motors" subfolder in the example program and enter in the appropriate address in the Motor_Address parameter for each instance of the Rollese Acmeda ARC2 v1.0 Motor Control module in your program (the example program has 5 motors. You may have more or less in your installation). Once the addresses have been entered, recompile and reload your program.
13. Refer to the help files included in the module package for further details and information regarding the capabilities of the module(s).

STEP 3:



Certified Module

Partner: Rollese Acmeda
Model: ARC2 Hub
Device Type: Shade/Motor Control



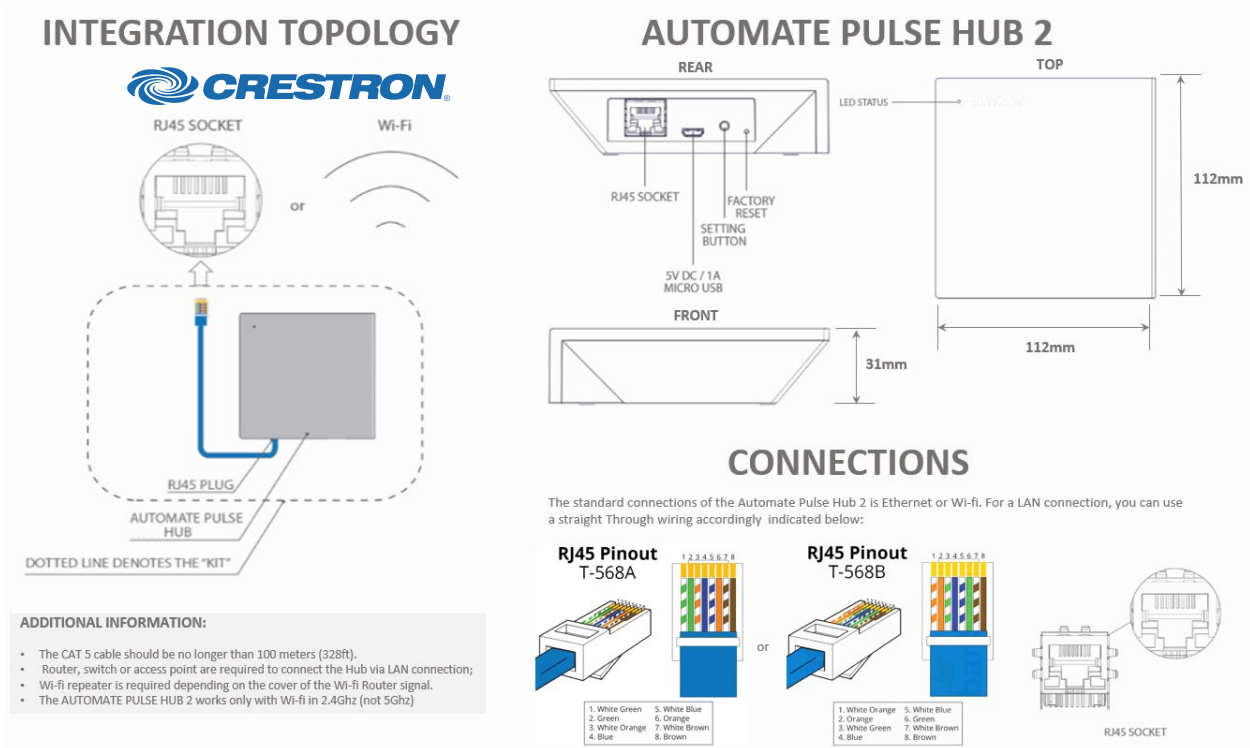
GENERAL INFORMATION

SIMPLWINDOWS NAME:	Rollese Acmeda ARC2 v1.0 Motor Control
CATEGORY:	Shades/Drapes
VERSION:	1.0
SUMMARY:	This module controls all the Rollese Acmeda ARC2 motor control points.
GENERAL NOTES:	This is a standalone "component" module allowing for controlling a single motor. This module requires an instance of the primary "Rollese Acmeda ARC2 v1.0 Command Processor IP" communication module be included in the program. Control for this "component" module will be bound to and flow through the primary Comm module.

Common Mistakes:

- Entering the wrong IP address in the "IP Address" configuration line.
If you're failing to discover devices double check this!

CRESTRON SMART HOME CONTROL SYSTEM CONNECTION:



FREQUENTLY ASKED QUESTIONS:

Q. No Pulse Hub 2 detected.

A. Make sure that your Automate Pulse 2 is connected to the correct network and get an IP Address available and still communicating with the network using the Automate Pulse App 2.

Q. Shade limits are not set properly.

A. Calibrate shade limits with your Rollease Acmeda remote before setting the appropriate open and close time within CONTROL4 SYSTEM.

Q. Shade is not moving at all.

A. Make sure the selected Pulse Hub 2 is the correct Pulse Hub 2 for the shade to be controlled. Confirm the correct bindings are set in the CONTROL4 System connections tab between the Pulse Hub 2 and Shade drivers.

Q. I have multiple Pulse Hub's 2, what do I do?

A. Load two Automate Pulse Hub 2 drivers. After selecting "Retrieve Hubs" located in the driver actions tab, you will see different Automate Pulse Hubs 2 - select the desired one.

Q. I don't see any shade bindings in the Pulse Hub 2 driver?

A. Select "Retrieve Shades" located in the driver actions tab.

Q. How do I scan for available Automate Pulse Hub's 2?

A. Once the Automate Pulse Hub 2 is properly connected via the Ethernet cable or Wireless network, navigate to the Automate Pulse Hub 2 Properties page within Composer. Select "Retrieve Hubs" located in the driver actions tab.

Q. We get unexpected responses from the CONTROL4 system, or "?" symbols

A. Ensure that all connections using the ethernet port or Wi-Fi are working properly. The missed connection has been known to yield unwanted or unexpected results.

SUPPORT RESOURCES:

For further assistance, contact your retailer, visit our website at www.rolleaseacmeda.com.